



Exterior, Starry Opera

Starry Opera

Project Title: Starry Opera

Student Name: Zhao YANG
Student ID: 6667281

Primary Supervisor: Seid Porobic
Secondary Supervisor: Heidi Saarinen

Module Title: MA Interior Design Final Project
Module Code: 7024AAD

Location: 40 Daqiao Road, Kaili, Qiandongnan Miao and Dong Autonomous Prefecture, Guizhou Province, China

Site Area: 890 sqm
Total Area: 1530 sqm

Material: Bricks, Recycled Tiles, Local Fir, Local Paulownia, Local Stone, Glass Fiber Reinforced Gypsum (GRG)

With the process of city modernisation and development, a lot of cities are losing its tradition.

If we treat the "form" is the external of a city, then the "content" is the internal of a city.

The functions of a city are always updating, but the shape of space is always lagging. A city fade because the gap between the form and the content. If the content is more than the form, the city will be too swollen to debacle; if the form is more than the content, it will crumbles gradually because it lacks of supporting.

The culture and spirit of a city is the "content", but it is facing to the situation of losing. So, how to balance the "form" and "content", or say, how to promote local culture in a opera theatre through interior design will be the research question and aim of this project.

Dong Minority is one of the main group in Kaili, they have one of the most unique and beautiful culture in China.

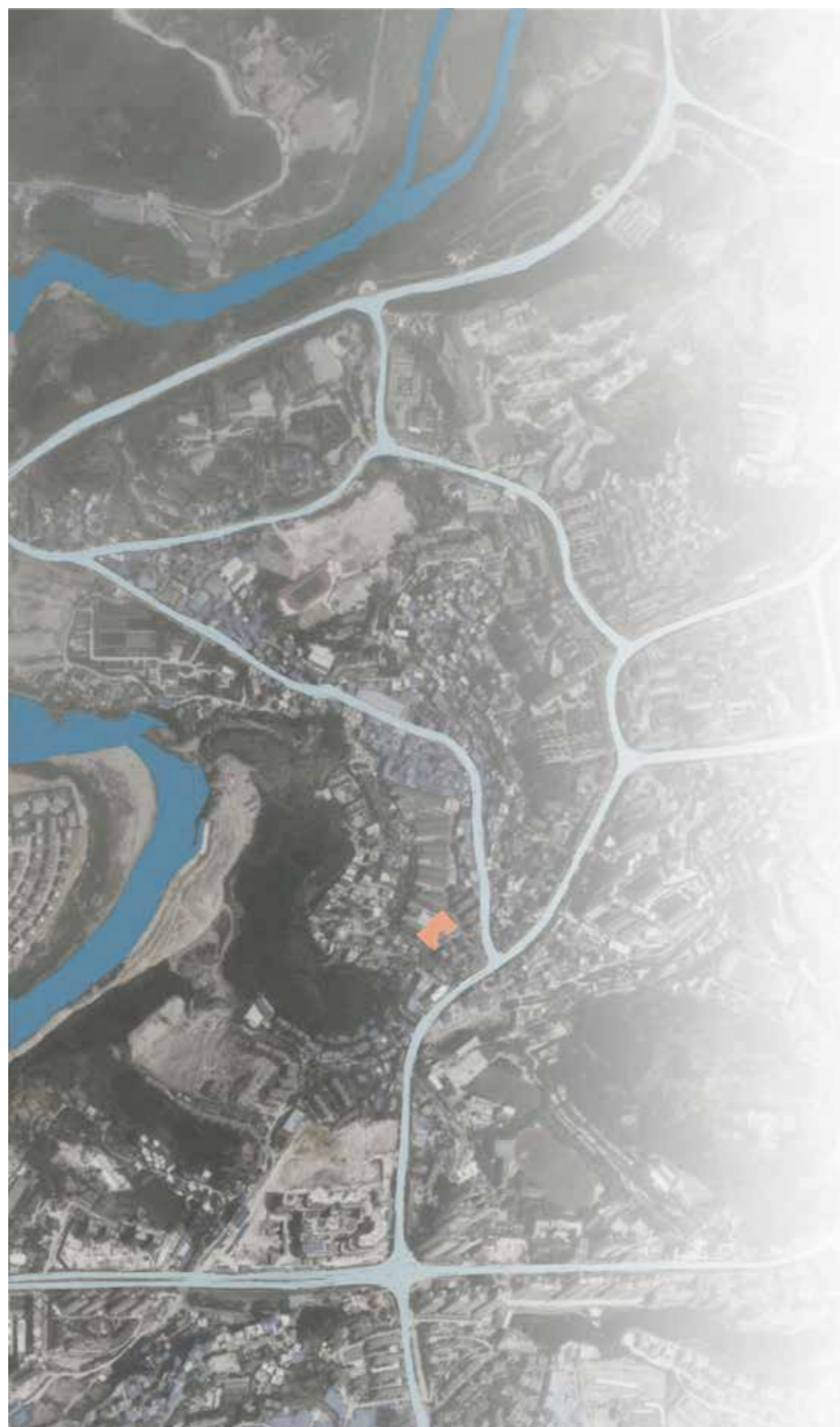
Dong people good at singing and love to sing, they grow and life with thier songs. They use singsing to talk to each other, to record, to pray, they believe thier music thier voice colud talk to the sky, talk to the god.

Sky, or haven is endless, it gives people a sense of utmost and mystery, especially some celestial body phenomenon such as sun, moon, stars and wind, rain, thunder, lightning,

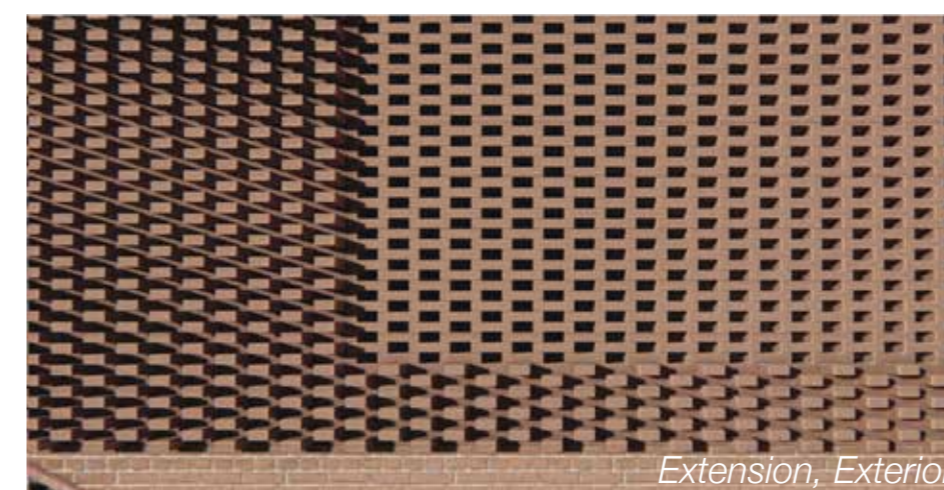


which are closely influence human's daily live and life, so the worship of celestial bodies was created in Dong minority. The celestial bodies are still one of the most content in their songs and poems in nowadays.

The theatre will be designed with celestial body / starry sky from Dong's religion and art. When performers playing in the theatre, they will feel the sense of belonging; and the audiences will feel Dong's culture in a new point of view.



MATERIAL



Extension, Exterior



Extension, Exterior



Lobby



Reflector, Wall



Reflector, Balcony

To connect to the local culture and the existing building, bricks and local timbers is chosen as the main materials.

The extended parts of the building is built by new bricks, patterns which symbolise celestial and galaxy is made by recycled local tiles, inlaid into the walls. The construction technology also keeps local materials and traditional craft alive, which is also an embodiment of indigenous sustainability construction tradition of China.

These new parts such as reception, bar and toilets are made by GRG, the new material is fulled of the sense of future, and could has an impacpion to the old brick material.

Acoustic panels is made by local fir wood and local paulownia wood, both of woods with stable quality and modest density, which could balance the absorption and reflection in the brick stone building. And local people also use these woods to make their strings instruments.



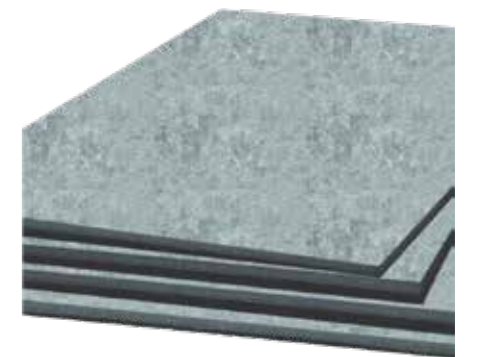
Red Brick



Recycled Tile



Glass Fiber Reinforced Gypsum (GRG)



PVC Floor



Local Paulownia



Local Fir